

THE CHRONICLES

Lutheran Church of the Resurrection

RR 12 & Spoke Hill Rd P.O. Box 1087

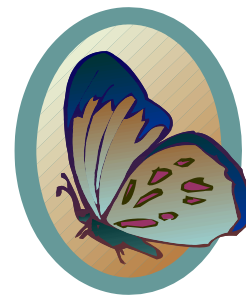
Wimberley, Texas 512-847-3386

Web page: www.welcometnewlife.org

E-mail: Office@welcometnewlife.org

Pastor: Jennifer Fuhr

Office Admin: Colleen Kaye



January, 2012

JANUARY 29TH

A HUGE DAY FOR THE LCR COMMUNITY!!

PLEDGE CARD OFFERING

TACO SUNDAY

ANNUAL MEETING

PEDER EIDE TASTE WORSHIP

FUN FOR ALL ☺

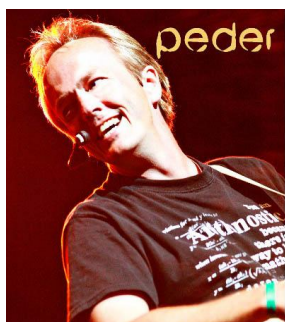
TACO SUNDAY

On **Sunday, January 29th** the youth will sponsor their famous Taco Sunday. This month all the proceeds will go toward summer travel expenses for the youth attending the ELCA National Youth Gathering (July in New Orleans). Any donations made will be matched by Thrivent Financial for Lutherans.

****Remember to bring your 2012 Pledge Cards to worship on January 29th** as we place them on the altar as an offering to our faithful God. (Pledge letters will be sent in the mail the beginning of January.)

ANNUAL MEETING

Sunday, January 29th following worship we will have our Annual Meeting. Annual Reports will be available to preview on Sunday, January 15th. Please feel free to pick one up at church (or call the office and we can mail it to you) and read up so that you are prepared to ask questions of clarification at the meeting. Other items on the agenda will be voting on the Constitution and Bylaw changes that were presented at the December Congregational Meeting as well as election of the 2012 Council. If you did not receive a copy of these structural changes, please contact the church office and a copy will be sent to you.



**TASTE
WORSHIP™**

with Peder Eide

Sunday, January 29th @ 7:00pm

New Life Lutheran Church in Dripping Springs

Families with children of all ages are welcome!

Peder is a Christian musician from Rosemount, Minnesota.

“If anyone can profess to be in tune to the heartbeat of today’s youth, Peder Eide (pronounced “I’d”) has certainly earned the right to make that claim. For nearly 1/3 of his life he has led Christ-centered praise and worship for youth conferences, festivals, camps, churches, and any other venues where teenagers and pre-teens have gathered.

In conjunction with the theme of his 10th CD, TASTE AND SEE, Peder felt God calling him to a heartfelt mission to unite moms and dads and brothers and sisters in one setting where they could “TASTE WORSHIP” together. Through this exciting new ministry, families are exposed to the power of praying with and for one another. They are equipped with practical tools that will transform their lives, guiding them into a lifestyle of worship. This has proven to be widely effective on a spiritual level, but equally fun and rewarding for families to grow in their bond together.

Peder says, “I want to help families worship. My vision is to encourage their connection with Jesus while at the same time helping them to engage with one another in worship at home, work, school, and on vacation. This is in addition to their regular Sunday worship.”

Talk to Pastor Jennifer for more information or go to www.pedereide.com I hope to see some of our LCR families at this great event!

BIBLE STUDY CONTINUES IN JANUARY

Living the Questions Series #2 begins in January. The thematic focus is “Reclaiming the World.” Sessions will include: Restoring Relationships; The Prophetic Jesus; Evil, Suffering & A God of Love; The Myth of Redemptive Violence; Practicing Resurrection; Debunking the Rapture; and Reclaiming the World.

We will meet on **Wednesday afternoons from 1-3pm in the Adult Education Room**. Session readings will be sent out the Monday before class via email. If you are unable to join us for the class but want to read a bit more about these topics and progressive Christianity, there will be copies of the sessions on the bulletin board at church.

Class Dates:

January 11 & 18

February 1, 8, 15, 22 & 29



AMIGOS DE JESUS BREAKFAST

As part of the Ministerial Alliance group in Wimberley, LCR will be hosting the Amigos breakfast on **Saturday, January 14th @ 7am**. The supplies will be purchased ahead of time, we just need a few LCR folk to come on out and accompany the Hispanic community over food and a bit of fellowship. Please contact Shirley Schliessmann if you can help on that morning.

Thank You

WE CAN'T THANK YOU ENOUGH!

THANK YOU TO.....

Everyone who provided supplies for the Christmas Bags for the Day Laborers. As well as a thanks to the folks that spent time packing 30 bags at Advent Family Night. AND a special thanks to Blaine Nelson, Harriet Powell, Shirley Schliessmann, and Mike Schliessmann for distributing these gifts to 23 men in December.

Everyone who was able to attend Advent Family Night. It was a great night of worship, food, fellowship, decorating and ornament making. A personal thank you from Pastor Jennifer goes out to all the unseen leaders behind the scenes that made the night a success (you know what you did to help☺) – Bunky Layton, Mike & Shirley Schliessmann, and Emily Merkord.

To Pat Spickler for taking the time to set up the nativity display (and fix several pieces) in the sanctuary. We always appreciate your time and effort! ☺

To all who came to help out at LCR's Yulelog Night at the Emily Ann Theatre Trail of Lights: Mike Schliessmann, Ron Weir, Angie Rose, Harriet Powell, JoAnne Miller, Brandon Merkord, Ben Raska, Dorcy Rhea, Bunky Layton.....hopefully we didn't miss anyone!

Dear LCR & Pastor Jennifer,

Thank you for the Lutheran Church's donation of \$50.00 for the 14th Annual Trail of Lights. With close to 100 exhibits, 35 Yule Log Hosts, 25 groups of entertainers, and many, many volunteers, this truly is a community event. Last year, 21,300 people visited the Trail of Lights and we expect at least that many to visit again this year. During Trail of Lights we see so much joy on so many faces. Thank you for helping to make this event possible and for helping us to fulfill our mission **to reinvest in the dignity of the human spirit.**

Thank you also for hosting a Yulelog evening. Your group is always so much fun to have around!

Sincerely,

Ann Rolling, Executive Director

Dear LCR Family,

Thank you for the generous gifts to us this year. Each of us agrees that this was a great year to receive such a gracious gift and acclimation of our work for the church. Not only do each of us have a special way to use this monetary gift, but it is always nice to receive appreciation from others – no matter in which form it comes.

Thank you again for thinking of us.

In Christ,

Pastor Jennifer, Colleen & William

Prayer List

We continue to pray for all who are ill and recovering and receiving treatments or testing and for Betty Spickler, Pat Spickler, Pam Longoria, Ruth Ann Heidenmeyer (sister of John Hill), Jim Valentine (father of Jason Valentine), Dot Currie (sister of Dirk Dierking), Aiden Pederson (friend of Lois Hickman), Chelsea Livingston (granddaughter of Dorcy Rhea), Melissa Larson (daughter of Dorcy Rhea), Stephen Simmons and his wife Jennifer (son of Nancy Volotko) and all care givers that devote their time to care for those they love.

Please be in prayer for our family and friends who are serving our country either stateside or overseas. Pray daily for peace in our world, particularly in Libya and the Middle East, and for all who suffer the consequences of war. We continue to pray for those who are hungry and for those who serve them. Please be in prayer for the Lord to replenish the earth as He sees fit. We also lift in prayer the families that are struggling with separation and divorce. We pray for those affected by tornadoes, floods, earthquakes, wind and dust storms as well as fires.

SEW-IN

On Saturday, January 21st, the quilting club will host the fourteenth sew-in. Come and help us make the Lutheran World Relief quilts. You can help with everything from tying the quilts to designing the tops or sewing the tops together. It's a great time of fellowship, fun and food. Lunch and snacks will be provided. Come all day or any time between 9:00-2:00. Call Colleen Kaye at 847-5121 if you have any questions. If you have any sheets or cotton material that you no longer have a use for bring them to the church office anytime. Check out the flier on the welcome table and take one home.

MEXICAN TRAIN

An event that takes place each month at the church – and is open to all who wish to come and join the fun. In case you aren't aware – this is a dominoes game. If you've never heard of it and wish to learn – come and join us. Whether you are an expert or a beginner – you will fit right in with this crowd of LCR folks. We play on the 3rd Thursday of the month, beginning at 12:30pm. The next play date is January 19th. If you would like to be on the e-mail list of dates, please contact Shirley Schliessmann.

HAND & FOOT CHANGES

It's a card game similar to Canasta and fun to play. In order to make it more available to all the players we have a new schedule. We will play on the second Monday and the fourth Thursday of each month at 1:00 p.m. So, we will play on January 9th and 26th. If you want to be on the email reminder list, contact Colleen at 847-3386.

LIFE LINE SCREENING

LCR is hosting another day of screening for folks in our community on **Friday, February 3**. If you would like to make an appointment for this screening, please contact Life Line directly @ 1-800-324-1851. This event is sponsored by St. David's HealthCare. See flyers in the narthex at church for more information.

JANUARY 19TH – SUSANNA’S KITCHEN COFFEEHOUSE

Doors open at 7pm, music starts at 7:30pm. Tickets at the door will be \$15. Stop by and hear Will Taylor singing songs of Willie Nelson in the style of Bob Wills. <http://stringsattachedhouseofwill.com> Proceeds from this Coffeehouse performance will be given to Operation Good Shepherd, Wimberley’s local helping agency. See the flyers in the narthex at church for more information.

OFFICE HOURS

In the interest of continuing to keep the expenses down as we move into 2012, we want to update the office hours for Colleen Kaye. She will be in the office on Mondays and Wednesdays on a regular basis. Thursdays will be on an as needed basis. Please keep this in mind if you need office assistance for any reason. Please note that the office will be closed on January 2nd.

ATTENDANCE BOOKS

Each Sunday the black attendance books are passed around in church. Our attendance records are tracked for every person; child, youth and adult. We ask that if only a few members of your family attend please list each person’s name so we can keep accurate attendance records. Thanks so much.

PRINT CARTRIDGE RECYCLE - GO GREEN!

Remember to save your print cartridges and recycle them at church. Place the used cartridge in a plastic bag and put it in the box displayed by the sanctuary. The church receives monies from this free-to-us program.

FLOWER CHART

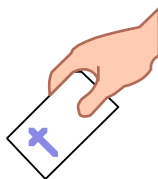
Check out the new 2012 flower chart in the narthex in January. Altar flowers are a great way to remember a special date or event for loved ones.

A FRIENDLY REMINDER

Please remember to wear your name tags on Sunday mornings.

AUTOMATED DONATIONS – SIMPLY GIVING

There is a program in place here at LCR where your offering can be deducted from your checking account each month automatically. It is called Simply Giving. For more information or to sign up please talk to Brandon Merkord. (*Your new offering envelopes are in your mailboxes.*)



NEW FINANCIAL SECRETARY

Brandon Merkord has joyfully accepted the position of financial secretary. We thank Colleen Kaye for her work as Financial Secretary during the changeover of Treasurers.

VOLUNTEER SCHEDULE

		1	8	15	22	29
Readers	10:00	JoAnne Miller	Danny Hickman	Carol Dierking	Dorcy Rhea	Dianne Kilpatrick
Worship Assistant	10:00	Colleen Kaye	Lois Hickman	Dirk Dierking	Mike Schliessmann	Shirley Schliessmann
Acolytes	10:00	Mike Schliessmann	Shirley Schliessmann	Sam Ellisor	Natalie Merkord	Colten Kilpatrick
Ushers	10:00	H.Mettenbrink/J. Valentine	Bradshaw & Schliessmann	Ellisors	Merkords	Kilpatrick & Schliessmann
Hospitality	10:00	Joan Mohr	Angie Rose	Blaine Nelson	Emily Merkord	Dianne Kilpatrick
Altar Guild	10:00	Colleen Kaye	Shirley Schliessmann	Beverly Ladzinski	Dorcy Rhea	Dianne Kilpatrick
Counters		Mettenbrink & Valentine	Schliessmanns	James Hollinger	Brandon Merkord	Mettenbrink & Valentine

NOTE TO READERS: The **Scripture readings** for the week you serve **will be in your box** at the beginning of the month. **We encourage you to** take them home and **read through them prior to your Sunday to share your gift** with the congregation.

Pronunciation Guides are available – one under the Lecturn (where you read) and the other in the Church office. Feel free to take and use them whenever needed.

IMPORTANT MESSAGE:

If you can't be present on the Sunday you are signed up to serve, please remember to **find your own replacement!!**

This is vital to making sure all leadership roles are filled each week.

Thanks! ☺